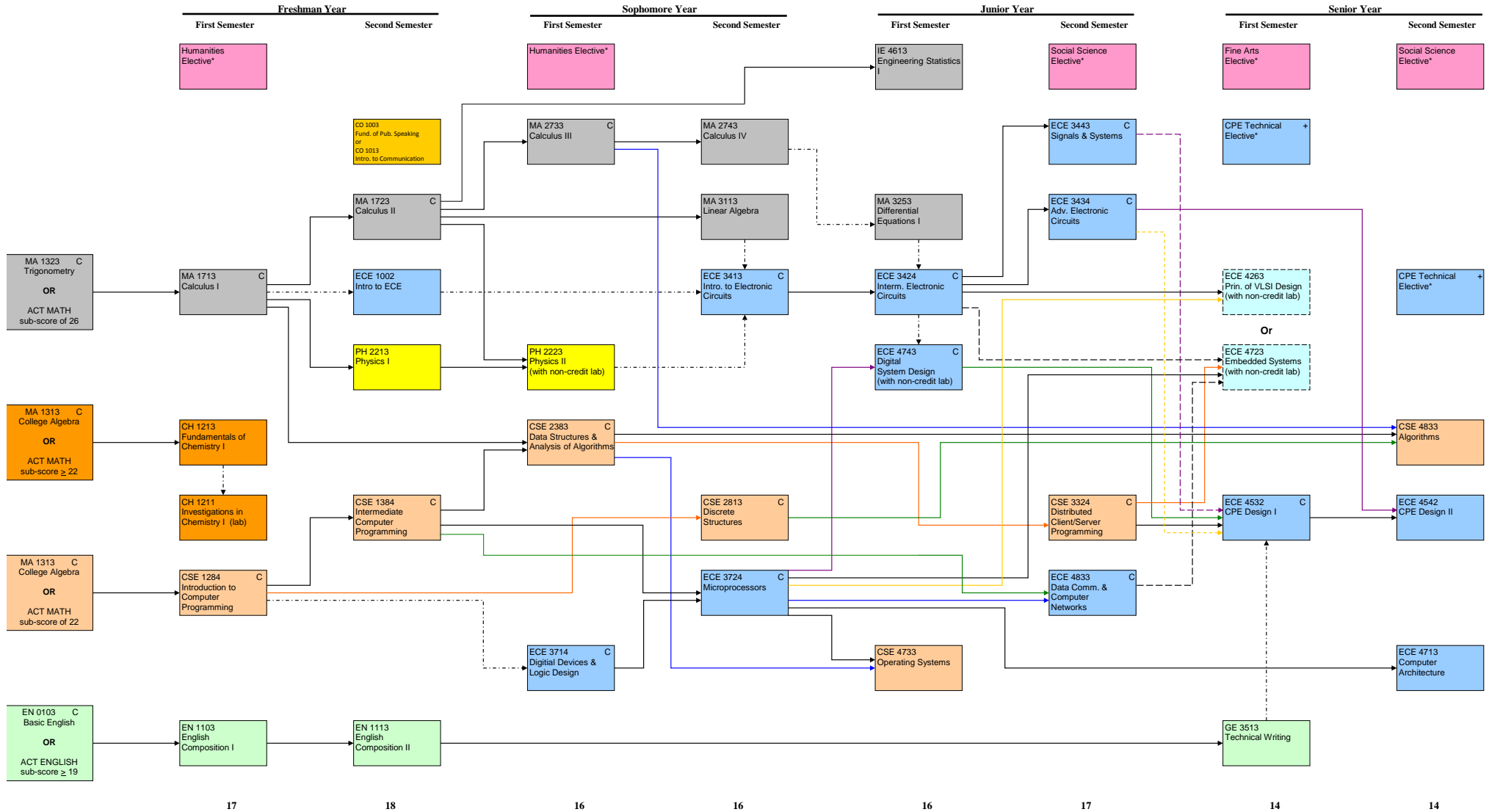


**Computer Engineering (CPE)
2010-11**
128 Total Hours



FLOWCHART LEGEND

- > Prerequisite (i.e. - credit required with min. grade shown)
- - - - -> Corequisite (i.e. - credit in or registration for course is required)
- - - - -> Either/Or (i.e. - credit required with min. grade shown for one of these two courses)

- * See website at www.ece.msstate.edu/academics/undergraduate_program.html for appropriate elective selections
- + Grade of "C" or better required for appropriate courses which are prerequisite to selected CPE Technical Electives
- C Grade of "C" or better required