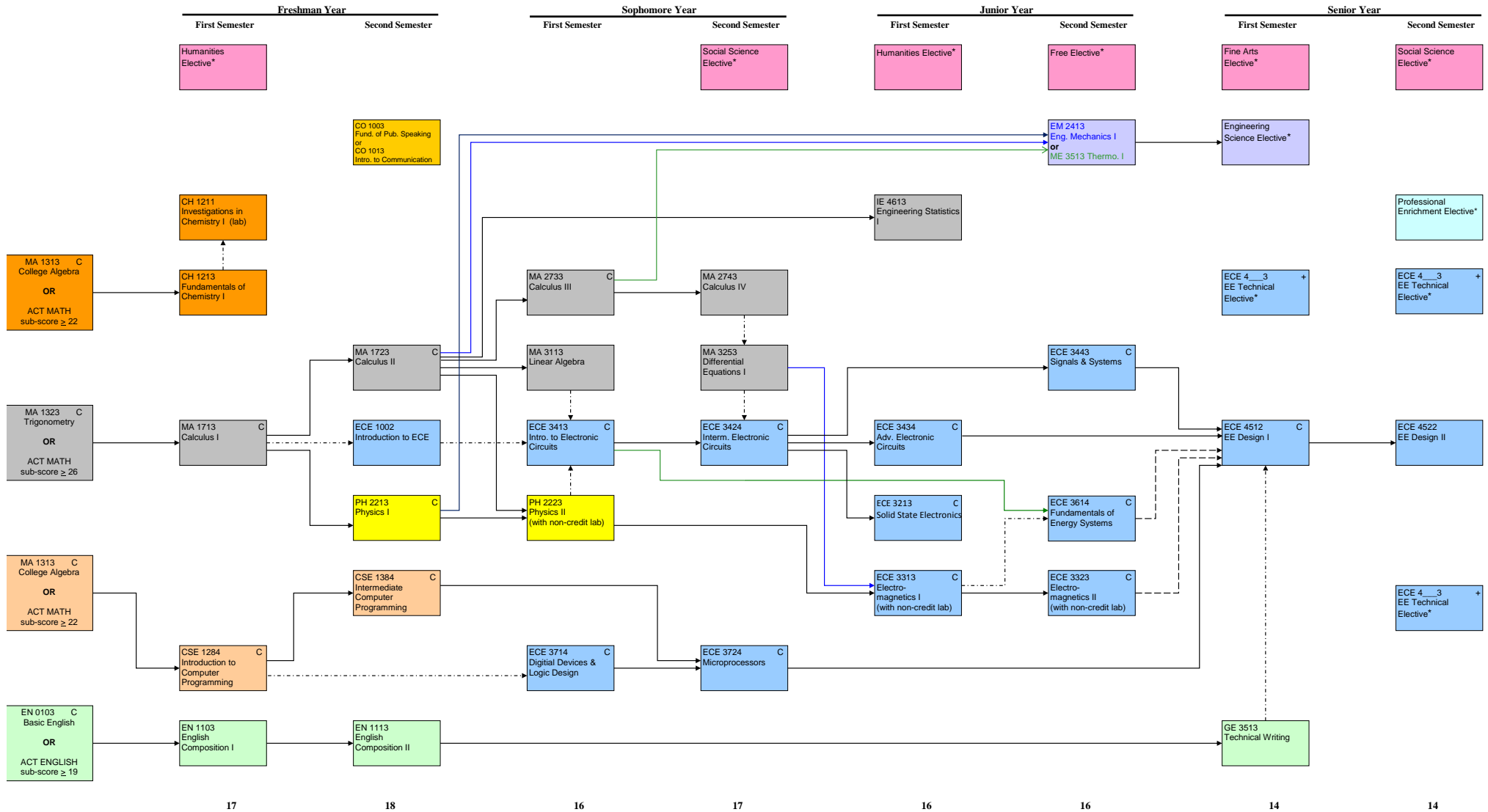


**Electrical Engineering (EE)  
2010-11**  
128 Total Hours



**FLOWCHART LEGEND**

- > Prerequisite (i.e. - credit required with min. grade shown)
- - - - -> Corequisite (i.e. - credit in or registration for course is required)
- - - - -> Either/Or (i.e. - credit required with min. grade shown for one of these two courses)

- \* See website at [www.ece.msstate.edu/academics/undergraduate\\_program.html](http://www.ece.msstate.edu/academics/undergraduate_program.html) for appropriate elective selections
- + Grade of "C" or better required for appropriate courses which are prerequisite to selected EE Technical Electives
- C Grade of "C" or better required